



# Certificate of Musicianship™

## SCM Musical Knowledge Worksheet

Name: \_\_\_\_\_ Instrument: \_\_\_\_\_

Student Number: \_\_\_\_\_ Teacher's Number: \_\_\_\_\_

Score \_\_\_\_\_ Check one: passed \_\_\_\_\_ needs more study \_\_\_\_\_

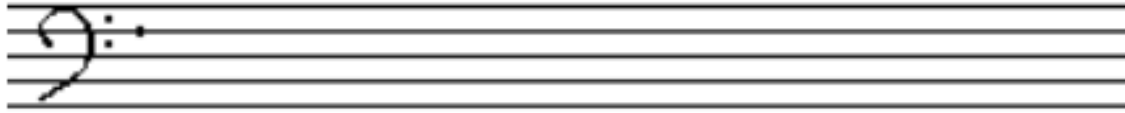
Passing Score: 70% or higher.

## Violin Level II

Copyright © 2014 by the Satori Certificate of Musicianship.

2014 SCM Violin Level III

1. DRAW five bass clefs. After each clef, which itself includes two dots, put another dot on the F line



2. WRITE the notes and bass clefs for the song, "Go Tell Aunt Rhodie"

Q = quarter note H = half note W = whole note

H	Q	Q	H	H	H	Q	Q	Q	Q	H
E	E	D	C	C	D	D	F	E	D	C

Write  
bass  
clefs

Go tell Aunt Rhodie,    Go tell Aunt Rhodie

H	Q	Q	H	Q	Q	Q	Q	Q	Q	W
G	G	F	E	E	C	D	C	D	E	C

Go tell Aunt Rhodie, The old grey goose is dead.

3. COMPLETE the following sentences

- a. The phrase for remembering the lines for bass clef is \_\_\_\_\_
- b. The spaces in treble clef spell \_\_\_\_\_
- c. The phrase for remembering the lines for treble clef is \_\_\_\_\_
- d. The phrase for remembering the spaces for bass clef is \_\_\_\_\_

4. FILL in blank

- a. Notes sound \_\_\_\_\_ on the right side of the keyboard.

(higher or lower)

b. Notes sound \_\_\_\_\_ on the left side of the keyboard.

(higher or lower)

c. A sharp means play the key to the \_\_\_\_\_ on the keyboard.

(right or left)

d. A flat means play the key to the \_\_\_\_\_ on the keyboard.

(right or left)

e. The key for D is to the \_\_\_\_\_ of D.

(right or left)

f. The key for C is to the \_\_\_\_\_ of C.

(right or left)

g. D sounds \_\_\_\_\_ than D.

(higher or lower)

h. C sounds \_\_\_\_\_ than C.

(higher or lower)

5. WRITE enharmonic equivalents for each of these notes:

A $\flat$  \_\_\_\_\_

B $\flat$  \_\_\_\_\_

C $\flat$  \_\_\_\_\_

D $\flat$  \_\_\_\_\_

D $\sharp$  \_\_\_\_\_

F $\sharp$  \_\_\_\_\_

B $\sharp$  \_\_\_\_\_

C $\sharp$  \_\_\_\_\_

A $\sharp$  \_\_\_\_\_